



# The School of St Jude

Fighting poverty through education

## School profile 2024 - 2025

The School of St Jude is educating a community of moral and intellectual leaders; fighting poverty in Tanzania

The School of St Jude is an english medium school pioneering leader in charitable education within Africa. Our Founder, Gemma Sisia, opened the school in 2002 with a big dream to bring the opportunity of free, quality education to children living in poverty. This remains our mission today.

We provide free, quality education to 1,800 bright, poor primary and secondary students, we support 100s of graduates with access to higher education and provide more than 20,000 government school students with volunteer teachers each year. 97% of St Jude's secondary graduates go on to access higher education, supported by Beyond St Jude's or by other means. Located across three campuses, we provide boarding for all secondary students and employ around 300 Tanzanian staff.

St Jude's promotes a holistic, well-rounded education so our students can do more than just succeed; we empower them to challenge the status quo, find solutions to assist the 45 million Tanzanians living in poverty and become the future leaders their country needs.

### Tanzania grading system vs other international grading systems

NECTA A-Level (Tanzania)	Approx. IB Equivalent	Approx. Cambridge A-Level Equivalent	International A-Level (Edexcel / AQA, etc.)
A (80-100)	7	A / A*	A / A*
B (70-79)	6	B	B
C (60-69)	5	C	C
D (50-59)	4	D	D
E (40-49)	3	E	E
S (35-39)	2	Not Applicable	Not Applicable
F (0-34)	1	U	U

## Profile Of St Jude's Class Of 2025



# 167

High school graduates 90% of whom are first generation students



# 1:1

Gender balance 74 girls and 93 boys



# 100%

Pass rate in National Examinations (Finals): 97 Distinction, 58 Merit, 12 Credit



89 Studied sciences,  
25 Studied business,  
53 Studied arts



# 70%

Volunteering for a year of community service

# How does a student get enrolled to St Jude's?

Every year, St Jude's invites thousands of talented candidates from government schools across three regions of Northern Tanzania (Arusha, Manyara and Kilimanjaro) to attend our Scholarship Application Days.

The scholarship application process is highly competitive and involves both academic testing and poverty assessment. These steps ensure that the students who are offered scholarships are both underprivileged and academically talented.

St Jude's aims to offer scholarships to students who will benefit the most from the free, quality education offered here.



## ESL & Typing

English as a Second Language (ESL) is a special program that helps our students reach an international standard of English competence. Students learn ESL through in-person and online lessons. In addition to these classes, students learn touch typing, a valuable skill in today's digital world, through a comprehensive and engaging program.



## Our Community Service Program

Our secondary school graduates may join our Community Service Program where they volunteer as teachers in understaffed government schools or in non-teaching placements throughout St Jude's. It is an opportunity of giving back in appreciation for the free education they received at St Jude's whilst also gaining valuable life skills.

The program comes in two forms, Community Service Semester (CSS) for Form 4 graduates or a Community Service Year (CSY) for Form 6 graduates. Since its launch in 2015, our graduates have taught over 146,000 students in government schools throughout Arusha and surrounding regions.

## Holistic Education

To offer a truly holistic education St Jude's supplements the national curriculum with additional subjects. This includes physical education (PE), art, music, religion, Information Communication Technology (ICT), English as a Second Language (ESL), Career guidance and Typing.

Students also participate in Extracurricular Activities (ECAs) and clubs as diverse as Computer Club, Tembo Club (anti-poaching), Public Speaking, Shamba Project (shamba means farm in Kiswahili) Choir and Drama to name a few.

These experiences teach our students invaluable skills of teamwork, leadership, and continuous personal development whilst consistently performing well in regional and national sports competitions.

## Support Letters

Our office assists families needing financial assistance through a comprehensive analysis of the family's financial status. This includes guiding families through the financial aid application process and composing support letters specific to their overall financial status and specific needs

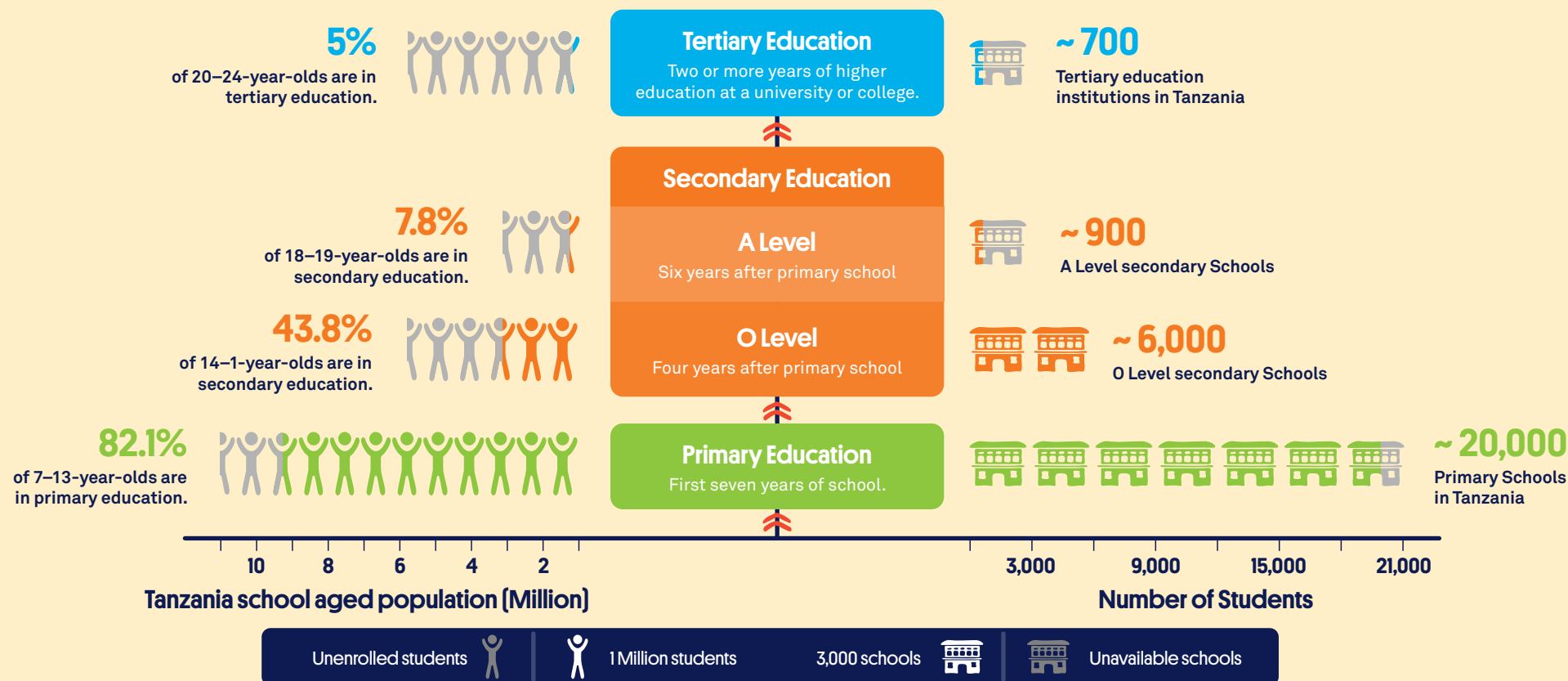


# Our Curriculum

*\*Our school follows the curriculum set by the National Examinations Council of Tanzania (NECTA)*

There are three key stages of school in Tanzania; seven years of primary school from Standard 1 to 7, then four years of secondary school from Form 1 to 4 in Ordinary Level (O Level) studies, and finally the final two years of secondary school, Form 5 and 6 in Advanced Level (A Level) studies.

## A summary of the Tanzanian Education System



**NB: The basic primary level classes are known as Standards, while the secondary ones are known as Forms.**

Progression from one level to another is not automatic. It depends on national examination results. At the end of Standard 7, Form 4 and Form 6, students sit for standardised national examinations and only those that pass progress to the next level. Although it is possible to retake a year, many children from poor families lose the incentive to continue and do not do so.



## Partnerships & Memberships

- High Achieving Low Income Access (HALI) Network
- Ashinaga Africa Initiative
- Trees that Grow
- Active member of IACAC and IC<sup>3</sup> Institute

## Best Time To Visit

The best time for admissions officers from abroad to visit secondary schools in Tanzania is late August/early September in the year before students graduate.

100% of our students do not possess passport at the time of application. As the cost to acquire a passport is significant.

The School of St Jude supports students passport application and tests once a student receives an official offer of admission and financial aid from the university or issuing organisation.



*These are some of the institutions that our alumni have been accepted to*

- Al Akhawayn University, MOROCCO
- Albukhary International University, MALAYSIA
- African Leadership University (ALU), RWANDA/MAURITIUS
- Africa University, ZIMBABWE
- American University of Beirut, LEBANON
- Ashesi University, GHANA
- IITM Madras - ZANZIBAR
- University of Bonn, GERMANY
- University of Botswana, BOTSWANA
- EARTH University, COSTA RICA
- University of Glasgow, SCOTLAND
- Kepler University, RWANDA
- Kwame Nkrumah University of Science & Technology, GHANA
- Marist College, USA
- University of Rochester, USA
- Stanford University, USA
- St Olaf University, USA
- The Hult Business School, USA
- Trinity College, USA
- Tufts University - USA
- Tula University, RUSSIA
- Westminster College, USA
- Whitman College, USA

## Contacts

### Senior Manager Special Programs

**Vivian Deus:** [Vivian.d@schoolofstjude.co.tz](mailto:Vivian.d@schoolofstjude.co.tz)

### Manager - Beyond St Jude's & Career Development Programs

**Mussa Challa:** [mussa.challa@schoolofstjude.co.tz](mailto:mussa.challa@schoolofstjude.co.tz)

### Team Lead - Alumni & Graduates' Careers

**Francis Lukumay:** [francis.s@schoolofstjude.co.tz](mailto:francis.s@schoolofstjude.co.tz)

### College Counselor - International Scholarships

**Denis Tarimo:** [denis.tarimo@schoolofstjude.co.tz](mailto:denis.tarimo@schoolofstjude.co.tz) | +255 766 200 609